

Adapting Technology to Teach Greek

Society of Biblical Literature
Biblical Greek Language & Linguistics Section
Rodney J. Decker

Technology Is Not a Panacea

- ◆ Complexity
- ◆ Time
- ◆ Money
- ◆ Compatibility



αβγδεζη

θικλμνξοπρ

στυφχψω

Potential Multimedia Techniques

- ◆ Audio annotations to graphics
- ◆ Graphical visualization
- ◆ Audio annotations to video demonstrations
- ◆ Video demonstrations of graphical elements
- ◆ Animated graphical frames (animated gifs)
- ◆ Audio annotations for animated graphics
- ◆ Animation of physical linguistic concepts
- ◆ Text annotations to video frames

α β γ δ ε ζ η

θ ι κ λ μ ν ξ ο π ρ

σ τ υ φ χ ψ ω

Delivery Methods

- ◆ Traditional classroom
- ◆ Internet classes
- ◆ Hybrid “super class”

“Web enhanced”
or “Web enabled”



α β γ δ ε ζ η

θ ι κ λ μ ν ξ ο π ρ

σ τ υ φ χ ψ ω

Video Projectors



αβγδεζη

θικλμνξοπρ

στυφχψω

Video Projectors



αβγδεζη

θικλμνξοπρ

στυφχψω

Video Projectors



αβγδεζη

θικλμνξοπρ

στυφχψω

Portable Projection System



Photo courtesy of Barry Farlow, FBBC, Ankeny, IA

αβγδεζη

θικλμνξοπρ

στυφχψω

Electronic White Board

◆ SmartBoard



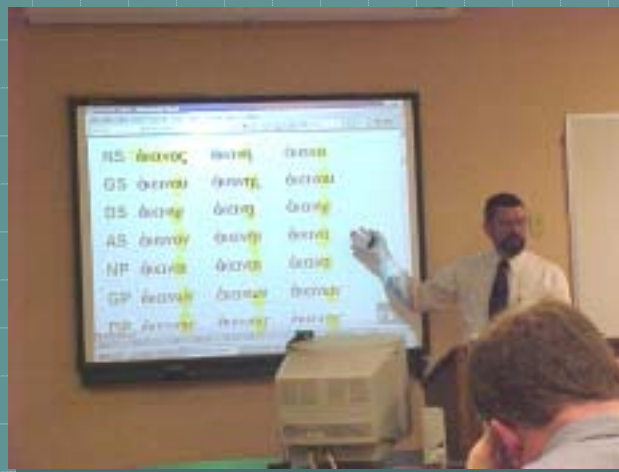
Photo from SmartTech website

α β γ δ ε ζ η

θ ι κ λ μ ν ξ ο π ρ

σ τ υ φ χ ψ ω

Electronic White Board



α β γ δ ε ζ η

θ ι κ λ μ ν ξ ο π ρ

σ τ υ φ χ ψ ω

Electronic White Board

A	1S	λελυκα	α	I am loose	ω	ον
C	2S	λελυκας	ας	You are loose	εις	ες
T	3S	λελυκει(ν)	ε(ν)	He is loose	ει	ε(ν)
I	1P	λελυκαμεν	αμεν	We are loose	ομεν	ομεν
V	2P	λελυκατε	ατε	You are loose	ετε	ετε
E	3P	λελυκασι(ν)	ασι(ν)	They are loose	ουσιν	ον

• κουνάτε
• κουνάσαι
• κουνάσασθε
• κουνάμεν
• κουνάσθε
• κουνάσασθε
• κουνάσασθε
• κουνάσασθε

07:41:29AM 27-Feb-2001

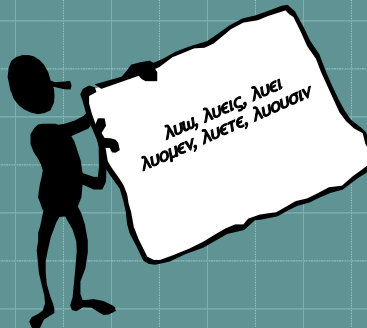
α β γ δ ε ζ η

θ ι κ λ μ ν ξ ο π ρ

σ τ υ φ χ ψ ω

Presentation Software?

◆ Try using a word processor!

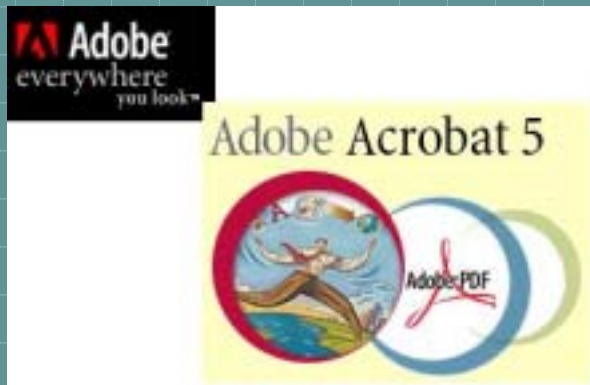


α β γ δ ε ζ η

θ ι κ λ μ ν ξ ο π ρ

σ τ υ φ χ ψ ω

Adobe Acrobat



α β γ δ ε ζ η

θ ι κ λ μ ν ξ ο π ρ

σ τ υ φ χ ψ ω

Presentation Programs

- ◆ PowerPoint
 - ◆ Verb Morphology
 - ◆ Contract Verbs



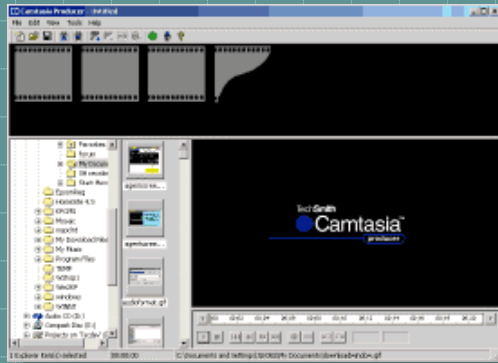
α β γ δ ε ζ η

θ ι κ λ μ ν ξ ο π ρ

σ τ υ φ χ ψ ω

Screen Video Recording

- ◆ Windows Media Recorder/Player
- ◆ Camtasia



α β γ δ ε ζ η

θ ι κ λ μ ν ξ ο π ρ

σ τ υ φ χ ψ ω

Screen Video Recording

A	1S	λελυκα	α	I am loose	ω	ου
C	2S	λελυκας	ας	You are loose	εις	ες
T	3S	λελυκε(ν)	ε(ν)	He is loose	ει	ε(ν)
I	1P	λελυκαμεν	αμεν	We are loose	ομεν	ομεν
V	2P	λελυκατε	ατε	You are loose	ετε	ετε
E	3P	λελυκασι(ν)	ασι(ν)	They are loose	ουσιν	ουν

- εκκλιση
- εκκλιση
- εκκλιση
- εκκλιση
- εκκλιση
- εκκλιση
- εκκλιση

071412500 27-700-200

α β γ δ ε ζ η

θ ι κ λ μ ν ξ ο π ρ

σ τ υ φ χ ψ ω

Animation

- ◆ MS GIF Animator
 - ◆ Writing Greek characters



α β γ δ ε ζ η

θ ι κ λ μ ν ξ ο π ρ

σ τ υ φ χ ψ ω

Animation

- ◆ MS GIF Animator
 - ◆ Writing Greek characters
- ◆ Macromedia Director (Shockwave)
- ◆ Macromedia Flash
 - (“Lite” version of Director)
- ◆ Greek prepositions (Director)

α β γ δ ε ζ η

θ ι κ λ μ ν ξ ο π ρ

σ τ υ φ χ ψ ω

Web Browsers & Pages

- ◆ Web pages as course supplements
- ◆ Internet courses

- ◆ FrontPage

- ◆ Manual coding for Greek text:

```
<font face = "Galilee">θεονV </font>
```

→ θεός

α β γ δ ε ζ η

θ ι κ λ μ ν ξ ο π ρ

σ τ υ φ χ ψ ω

The screenshot shows a Microsoft Internet Explorer window displaying a web page for 'NT502-3, Web Greek'. The browser's address bar shows 'http://www.studyresources.com/NT502/Default.asp'. The page features a navigation menu on the left with buttons for 'Home', 'Web Info', 'Schedule', 'Syllabus', 'Courses', 'Reading Resources', 'Downloads', and 'Site Map'. The main content area has a header with the course title 'NT502-3, Web Greek' and a sub-header 'Fall 1999, 4 credits and Spring 2000, 4 credits'. Below this is a 'Welcome to Web Greek!' message and a paragraph explaining the course format. At the bottom of the page, there is a URL: '<http://www.studyresources.com/NT502/Default.asp>'. The browser's status bar at the bottom shows 'Local intranet'.

α β γ δ ε ζ η

θ ι κ λ μ ν ξ ο π ρ

σ τ υ φ χ ψ ω

Audio

- ◆ Individuals letters
- ◆ Words
- ◆ Sentences/verses
- ◆ Continuous text
- ◆ Music!

α

β

Χριστός

ἔσχατος

alphabet

α β γ δ ε ζ η

θ ι κ λ μ ν ξ ο π ρ

σ τ υ φ χ ψ ω

Video Recording



α β γ δ ε ζ η

θ ι κ λ μ ν ξ ο π ρ

σ τ υ φ χ ψ ω

Video Recording



αβγδεζη

θικλμνξοπρ

στυφχψω

Video Recording



αβγδεζη

θικλμνξοπρ

στυφχψω

Video



Course Intro



Dr. Tony Beckett

α β γ δ ε ζ η

θ ι κ λ μ ν ξ ο π ρ

σ τ υ φ χ ψ ω

Video As Illustration

- ◆ Introduction to “voice”
- ◆ 1984 “Orwellian” TV commercial
- ◆ Give me a sentence using:
 - ◆ *Woman* as subject & *hammer* as object
 - ◆ *Hammer* as subject & *woman* as object...

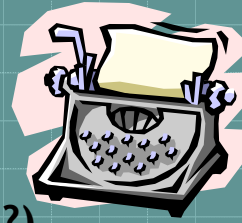


α β γ δ ε ζ η

θ ι κ λ μ ν ξ ο π ρ

σ τ υ φ χ ψ ω

Font Issues



- ◆ Fonts are a major issue!
- ◆ ASCII: 128 chars., 256 chars (?)
- ◆ Unicode: 1 million+ chars, glyphs from multiple languages & scripts in a single encoding in the same portable document
- ◆ Traditionally: Greek glyphs/Eng. 'slots'
- ◆ OpenType: char. sequences > glyph seq.

α β γ δ ε ζ η

θ ι κ λ μ ν ξ ο π ρ

σ τ υ φ χ ψ ω

Font Issues

- ◆ Mounce
α β γ δ ε ζ η θ ι κ λ μ ν ξ ο π ρ σ τ υ φ χ ψ ω
- ◆ SP Ionic
α β γ δ ε ζ η θ ι κ λ μ ν ξ ο π ρ σ τ υ φ χ ψ ω
- ◆ Galatia
α β γ δ ε ζ η θ ι κ λ μ ν ξ ο π ρ σ τ υ φ χ ψ ω
- ◆ Galilee
α β γ δ ε ζ η θ ι κ λ μ ν ξ ο π ρ σ τ υ φ χ ψ ω

α β γ δ ε ζ η

θ ι κ λ μ ν ξ ο π ρ

σ τ υ φ χ ψ ω

Course Delivery Software

- ◆ BlackBoard, eCollege, WebCT, etc.
- ◆ Advantages
 - ◆ Consistent look and user interface
 - ◆ Professional appearance
 - ◆ Automated quiz/test capabilities
 - ◆ Threaded discussion forums
 - ◆ Technical support

α β γ δ ε ζ η

θ ι κ λ μ ν ξ ο π ρ

σ τ υ φ χ ψ ω

WebCT

- ◆ Steep learning curve
- ◆ Software architecture (server based)
- ◆ Overview of features
- ◆ Font issues within WebCT

◆ `a b g d e`

→ α β γ δ ε

α β γ δ ε ζ η

θ ι κ λ μ ν ξ ο π ρ

σ τ υ φ χ ψ ω

WebCT Quiz System

- ◆ Question types
 - ◆ Multiple choice
 - ◆ True/False
 - ◆ Short answer
 - ◆ Paragraph answer
 - ◆ Matching < font problem!
- ◆ Diacriticals: may need graphic...

α β γ δ ε ζ η

θ ι κ λ μ ν ξ ο π ρ

σ τ υ φ χ ψ ω

Parsing Questions

Parse the following form; mark all that apply: έβαλομεν.

- | | |
|------------------|-------------------------|
| 1. First person | 10. Active voice |
| 2. Second person | 11. Middle voice |
| 3. Third person | 12. Middle or passive |
| 4. Singular | 13. Lexical form βαλω |
| 5. Plural | 14. Lexical form βλω |
| 6. Present | 15. Lexical form βαλλω |
| 7. Future | 16. Lexical form έβαλον |
| 8. Imperfect | 17. Lexical form έβαλω |
| 9. Aorist | 18. Lexical form έβαλλω |

α β γ δ ε ζ η

θ ι κ λ μ ν ξ ο π ρ

σ τ υ φ χ ψ ω



Course Development Suggestions

- ◆ Start small and build
- ◆ *Do* work toward web-based materials
- ◆ Use mainstream technology
- ◆ Provide explicit instructions
- ◆ Never experiment in a class setting
- ◆ Technology is not a magic wand

α β γ δ ε ζ η

θ ι κ λ μ ν ξ ο π ρ

σ τ υ φ χ ψ ω